

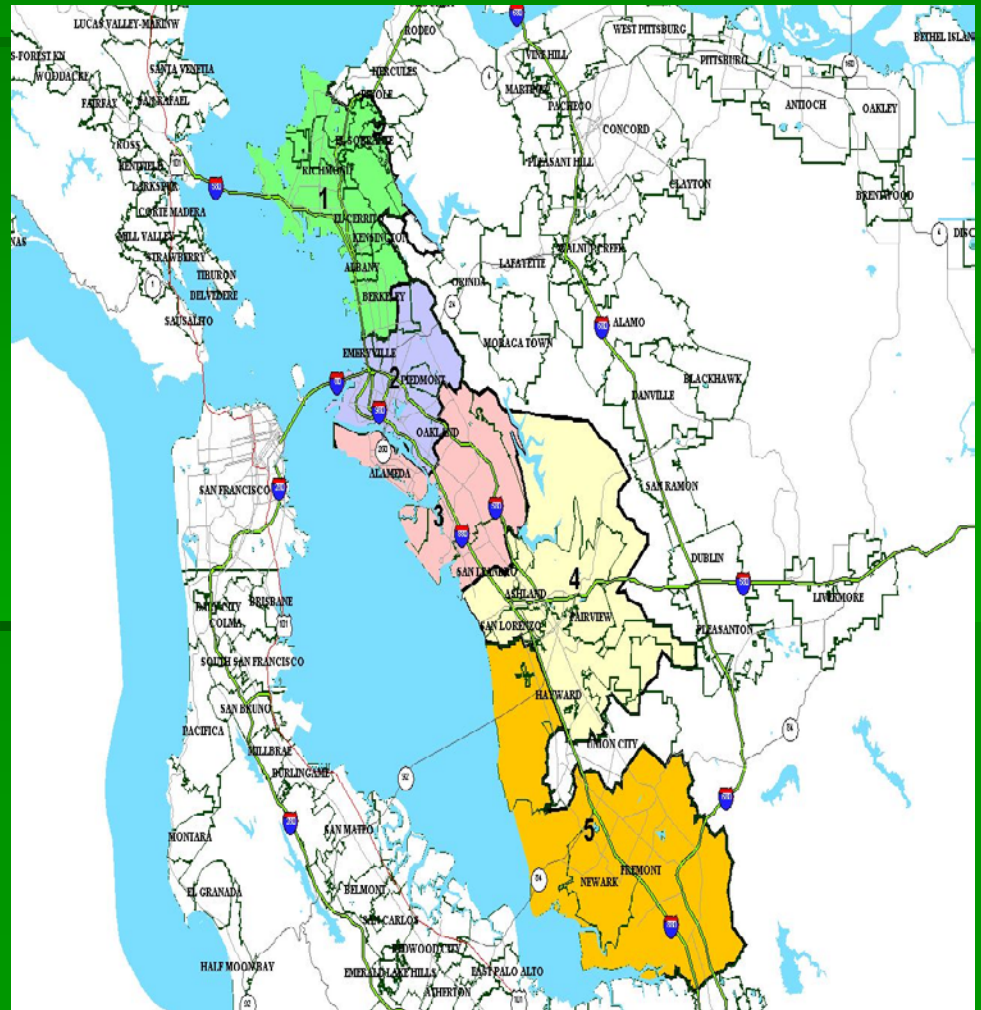
AC Transit

Alameda-Contra Costa Transit District



AC Transit Service Area

- Serves:
 - Alameda & West Contra Costa County
- 3 types of service:
 - Local
 - Rapid
 - Transbay



Planning Your Trip

- Call AC Transit Customer Relations Department: 510-891-4777 or visit actransit.org



- Call 511



or visit transit.511.org

- System maps and Schedules



	San Leandro BART	Seminary Ave. & International Blvd.	International Blvd. & 34th Ave.	Uptown Oakland
1T	1246a	103a	111a	126a
1T	146a	203a	211a	226a
1T	246a	303a	311a	326a
1T	346a	403a	411a	426a
1T	446a	503a	511a	526a
1T	546a	603a	611a	626a
1T	601a	620a	628a	644a
1T	611a	630a	638a	654a
1T	621a	640a	648a	704a

- Ask the bus operator

How much does it cost to ride AC Transit?

- Local fares for Seniors (65+) and People with Disabilities

- Cash - \$1.25
- Clipper - \$1.12
- Transbay - \$3.00
- Local to Transbay Upgrade Cash - \$1.75
- Local to Transbay Upgrade Clipper - \$1.88
- Monthly pass- \$34.00



- DAY PASS (No more Transfers)

- Day Pass for unlimited daily riding, until 3:00 am
- \$2.75 cash (**On bus purchase or BRT Station only**)
- \$2.50 Clipper (automatically applied)

Senior Clipper Card

- Available to...
 - Seniors age 65 or older
- Cost: FREE
 - Just add cash to ride
 - No Renewal Fee
- How to Apply:
 - Mail
 - Email
 - Fax



Download an application at:

https://docs.clippercard.com/brochures/en/clipper_seniorapp_mailin_01-11-16.pdf

www.clippercard.com

What can you load on a Senior Clipper card?

Monthly Pass

\$34.00 – Unlimited
local rides in a
calendar month

Cash



**Or Add Both a
Monthly Pass
and Cash**

Regional Transit Connection (RTC) Discount Clipper Card

- Available to...
 - Individuals with a disability
 - Seniors (age 65+) who require an attendant

- Cost:

- \$3 Application Fee
- \$5 for replacement
- \$3 Renewal Fee (every 5 years)



www.clippercard.com

What can you get on RTC Clipper Cards?

Monthly Pass

\$34.00 –
Unlimited local
rides on a
calendar month

Or Add Both a
Monthly Pass
and Cash

Monthly Sticker

\$34.00 –
Unlimited local
rides on a
calendar month



Or Add Both a
Monthly Sticker
and Cash

Cash Value



Or Add Both
Cash and
Monthly Pass or
Sticker

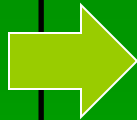
Which Discount Clipper Card Should I Get?

	Clipper Card	RTC Clipper Card
		
Senior (65+)	X	
Disabled		X
Senior (65+) and Disabled	X (But if you need an attendant, then you'll need an RTC card)	

Get it...Load it...Tag it

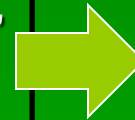
Get it

- For Senior Clipper card, submit an application with proof of age
- For RTC Clipper card, you will need to submit an application with supporting documents



Load it

- Clipper Retail Locations (like Walgreens, Raley's, Whole Foods and more...)
- BART Ticket Machines (cash value only)
- Phone
- Online



Tag it

...on the bus



or BART



AC Transit Accessibility

- Buses are designed to accommodate the needs of Seniors and People with Disabilities.
- Priority Seating – Clearly Marked.
- 2 Wheelchair Securement Areas on every bus.
- Ramps and kneelers on every bus.
- Stanchions (handrails) throughout the bus and on every seat.
- Internal Text Messaging signs and Automatic Voice Announcements

FLASH CARD KITS

Travel Aids for Communicating with the Driver



The **LIFT/RAMP** card tells the driver that you need to use the passenger lift/ramp.



The **KNEELER** card tells the driver that you want the bus lowered.



The **WAIT** card tells the driver to wait until you are seated before moving the bus.

For More Information

AC TRANSIT
CUSTOMER RELATIONS DEPARTMENT
510-891-4777

Customer Service Agents are available
Monday through Friday, 6:00 am to 7:00 pm;
Saturday and Sunday, 9:00 am to 5:00 pm.
Language assistance is available.

